



## Galaxy Class Series

*...Updated Release...*

Original Design Framework!


This is our latest and greatest release... For Windows 7 and Beyond!  




The eternal symbol of progress and enlightenment now finds new resonance in the digital age, with the unveiling of the NetSurfer Prometheus browser—a modern digital Prometheus, bringing innovation, security, and seamless browsing to those who dare to seek more.

NetSurfer Prometheus is a revolutionary browser that, rather than stealing fire, gifts you the blazing speed, security, and innovation needed to dominate the online digital realm without facing the wrath of BigTech, or any of the other cheap Chromium browser clones...

Now comes with the best free password manager on the net!



**Proton Pass**  
Password manager

NetSurfer v3 Browser Extension 

Much like its mythological predecessor, the NetSurfer Prometheus browser doesn't settle for mediocrity. It's built on the sturdy, dependable Chromium framework but throws in a hefty dose of original SSuite Office magic, ensuring you get more than the usual cookie-cutter experience.



This browser won't leave you frustrated like that third cup of second-rate coffee; its lightning-fast performance means you can stream your favorite shows, blast through online gaming, and breeze through tabs like a Titan with a mission—all while looking sleek and staying secure.



No performance dips, no sluggishness—just pure, uninterrupted browsing bliss ensuring rapid page loads and smooth navigation across the web! Its lightweight design ensures smooth operation, even on less powerful devices, making it ideal for both intense gaming sessions and relaxed entertainment breaks.

In the heart of NetSurfer Prometheus lies its commitment to user safety and innovation. Security is paramount, which includes sophisticated malware defenses, a built-in ad blocker, and protection against phishing and other online threats. Much like Prometheus defied the gods to protect mankind, this browser shields users from the dangers lurking in the digital world, ensuring that online activities—from casual browsing to secure transactions—are conducted safely and without worry.



NetSurfer Prometheus comes with built-in defenses and blocks all the online nasties lurking in the digital shadows. And with an ad blocker that actually blocks ads (imagine that!), you'll be able to surf without the constant interruption of pop-ups and banners. It's like having an invisible shield of protection, minus the annoying epic monologue about fate and destiny.



**SSuite NetSurfer Prometheus web browser, for Windows 7 and 8, does not support Extensions, this is due to security concerns.** By default, WebView2 is evergreen and receives automatic updates to help you stay on the latest and most secure surfing platform. The WebView2 runtime control is Chromium-based for best performance and security. Rely on an up-to-date version of Chromium with regular platform updates and security patches.



## SSuite Video Demos

- SSuite NetSurfer Browser -- [Demo Video - Watch Now!](#) { 5:44 min }
- SSuite NetSurfer Media-Player -- [Demo Video - Watch Now!](#) { 1:15 min }
- SSuite NetSurfer Hardware Access -- [Demo Video - Watch Now!](#) { 0:43 sec }
- SSuite HomePage Bookmarking -- [Demo Video - Watch Now!](#) { 1:16 min }

### ⚠ Running Instructions - Desktop Edition:

- Make sure the WebView2 control is installed on your system, if not or you don't wish to have Microsoft's Edge browser installed, simply download and install the [WebView2 runtime control](#). This will then enable NetSurfer to run perfectly on your system.
- **For Your Information!** - While installing NetSurfer, the installer will have an option on the last dialog window to have the WebView2 runtime control automatically installed for you, if you have not done so already.
- **Please take note** - On first time startup the application will take a few extra seconds longer to open. This is because our browser executable needs to create custom folders for the browser history, cache, and settings. Afterwards it will run as normal.

### ⚠ Running Instructions - Portable Edition:

- Unzip, copy, and then paste all the files into a custom folder with full writing and reading access. This is needed to allow the browser to create its own data folders and run properly.
- Make sure the WebView2 control is installed on your system, if not or you don't wish to have Microsoft's Edge browser installed, simply download and install the [WebView2 runtime control](#), if you have not done so already. The installer is also included in the download file!

**[Please try our latest release... we've found it to be the fastest browser on the net!](#)**

[Read more here](#) to see how the major web browsers did in their speed tests. Test SSuite NetSurfer for yourself or test your own favourite browser to see which is the fastest!



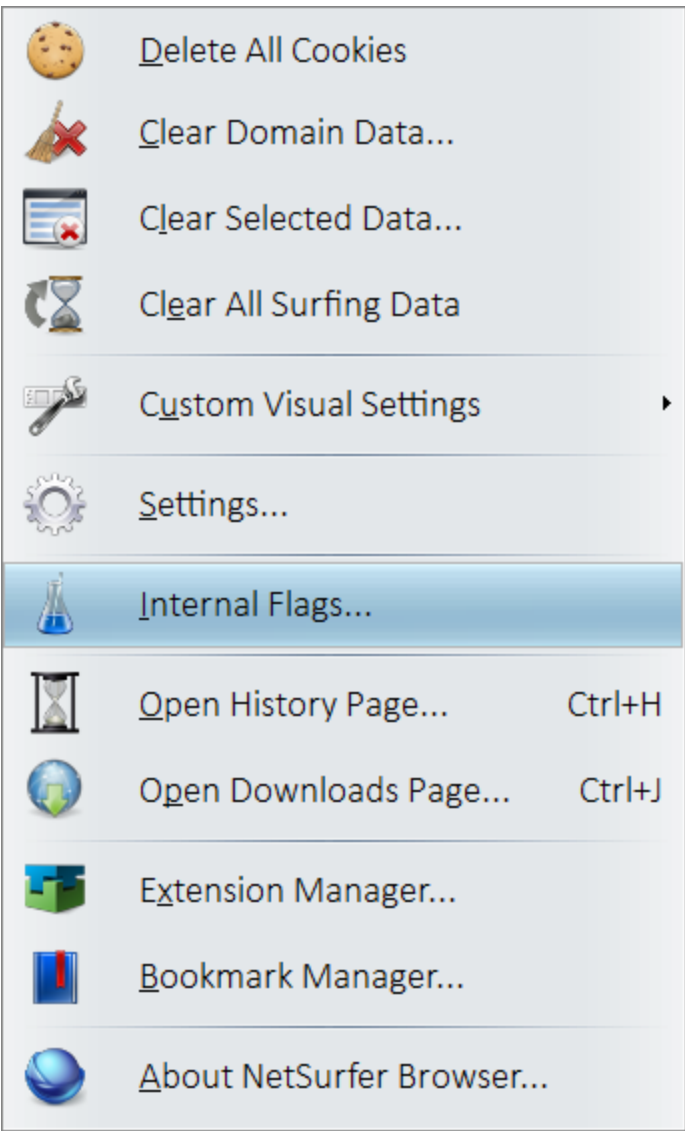
## Donate and become our Hero!

[Be Nice and Click Here to Donate!](#)

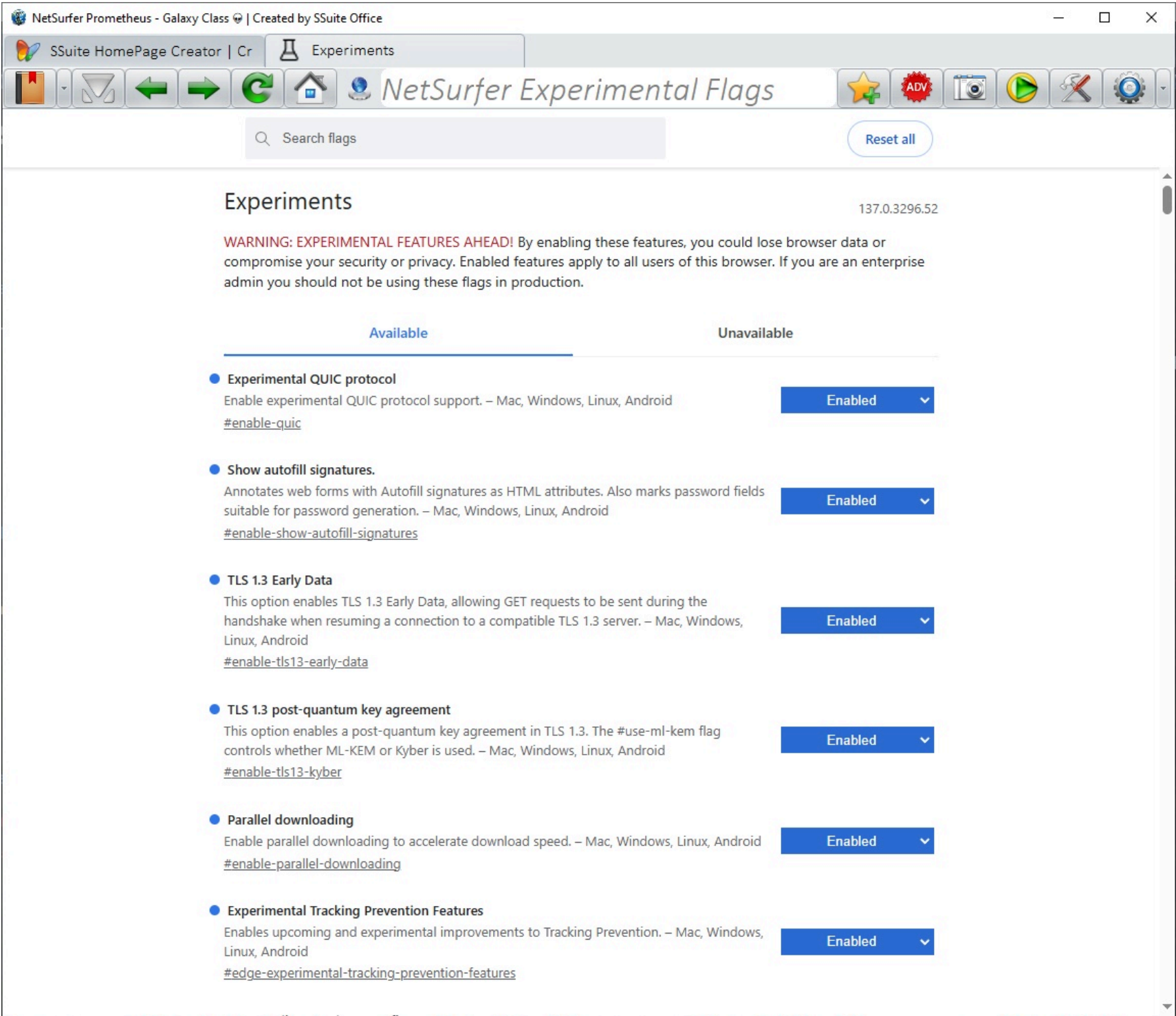
Please donate to help support our efforts in providing you with free office software.

Enhance your Browser Security Now!

Navigate to our "Internal Flags" option in the controls menu in our NetSurfer browser...



The following page will now present itself...



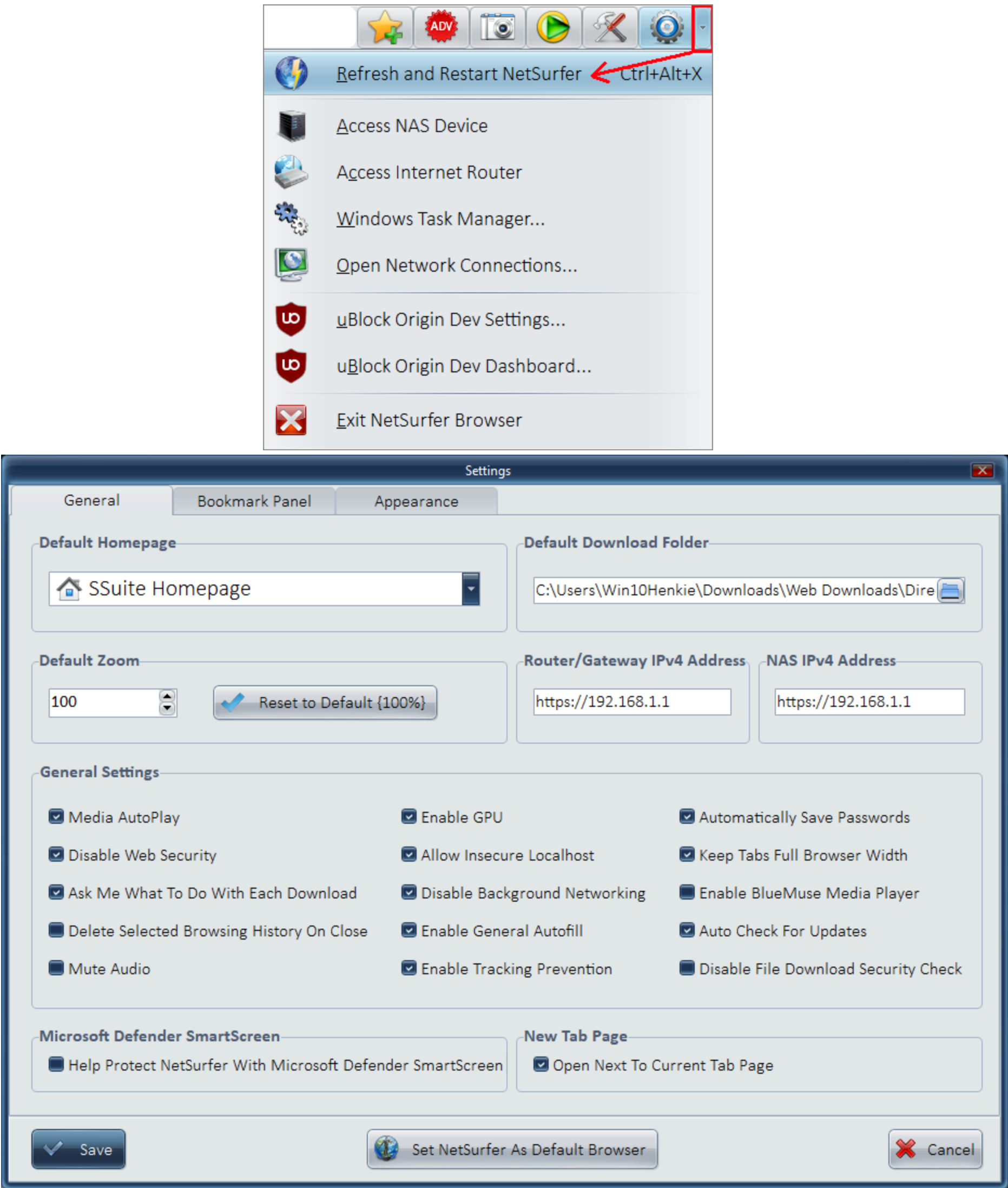
You need to type in each of the following hash tags to enable the appropriate setting:

- 1. #enable-quic
- 2. #use-dns-https-svcb-alpn
- 3. Windows 10 and up: #edge-post-quantum-kyber
  - Windows 7 and 8: #post-quantum-cecpq2
- 4. Windows 10 and up: #enable-tls13-kyber
  - Windows 7, 8, and 10: #enable-tls13-early-data
- 5. #enable-parallel-downloading
- 6. #edge-tracking-prevention { MS Edge and NetSurfer browsers ONLY! }
- 7. #edge-experimental-tracking-prevention-features { MS Edge and NetSurfer browsers ONLY! }

You may be asked to restart or relaunch the browser after having changed all the settings...

Please do not use the "Blue Restart" button at the bottom of the Flags page in the NetSurfer browser. After changing settings, simply close and reopen the application normally, as the Restart button is non-functional!

Use the below function for best user experience and performance!

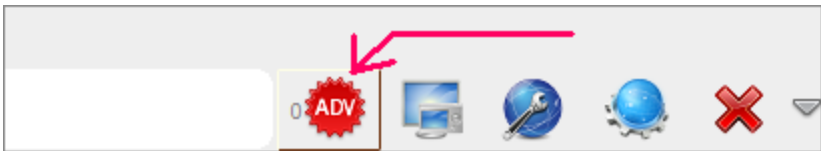




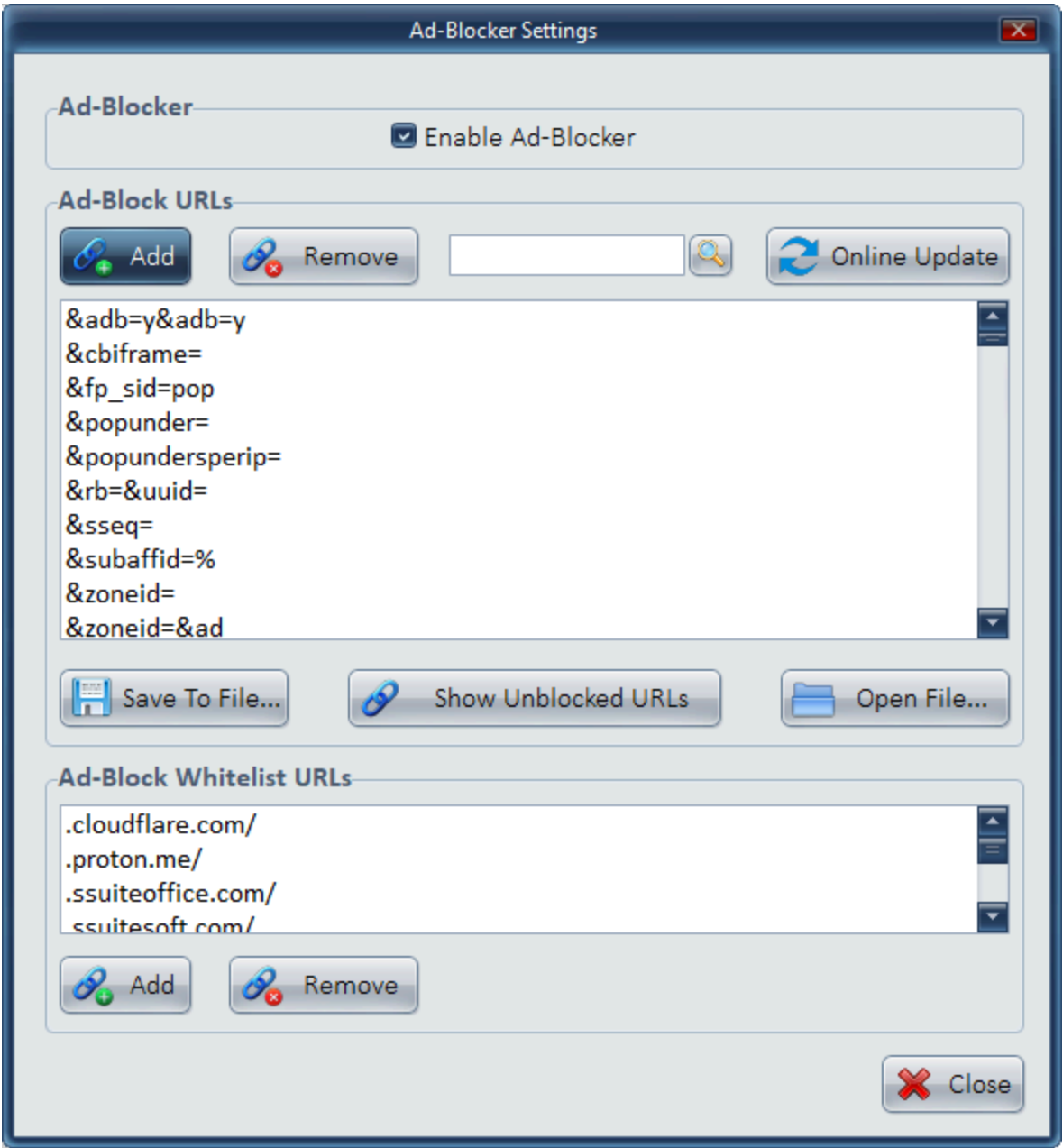
**We now have a built-in Ad-Blocker for our browser...**

When you open the general "Settings" window, you will see the "Ad-Blocker" button on the bottom-right of the screen. Click on this button to access all the options available for this feature. To enable or disable the "Ad-Blocker" function, just select or deselect the checkbox at the top of the window.

You may also just click on the front "AdBlocker" button to view its available settings:



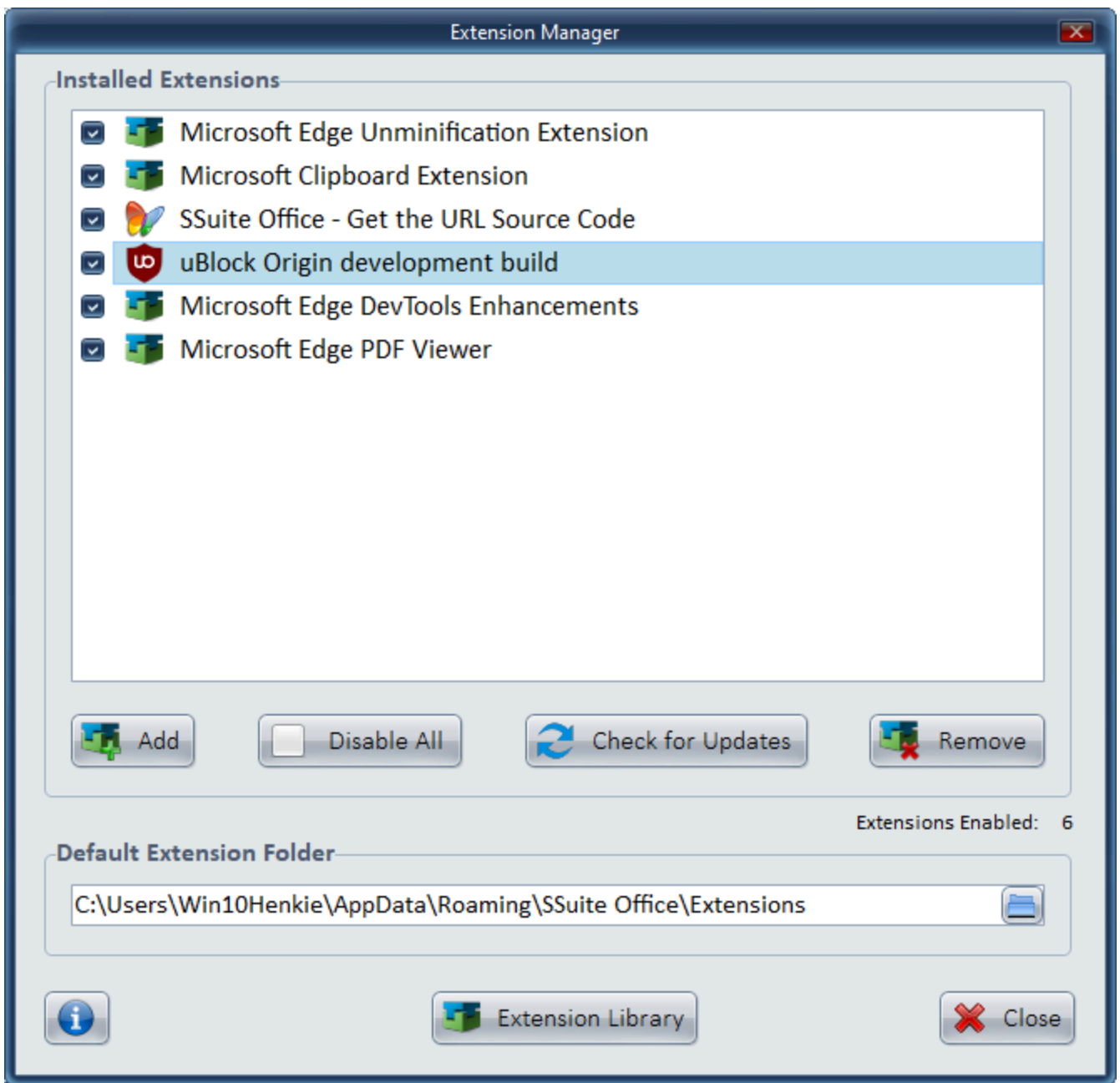
We have also added manual and online update buttons to keep the Ad-Blocker URL link-list up to date. The manual update allows for either you downloading our Ad-Blocker file from our main [NetSurfer web page](#), or for you to add your own custom Ad-Blocker list. As long as your own data list conforms to our list configuration e.g. one URL per line, you may upload any length of file to the list, as seen below...



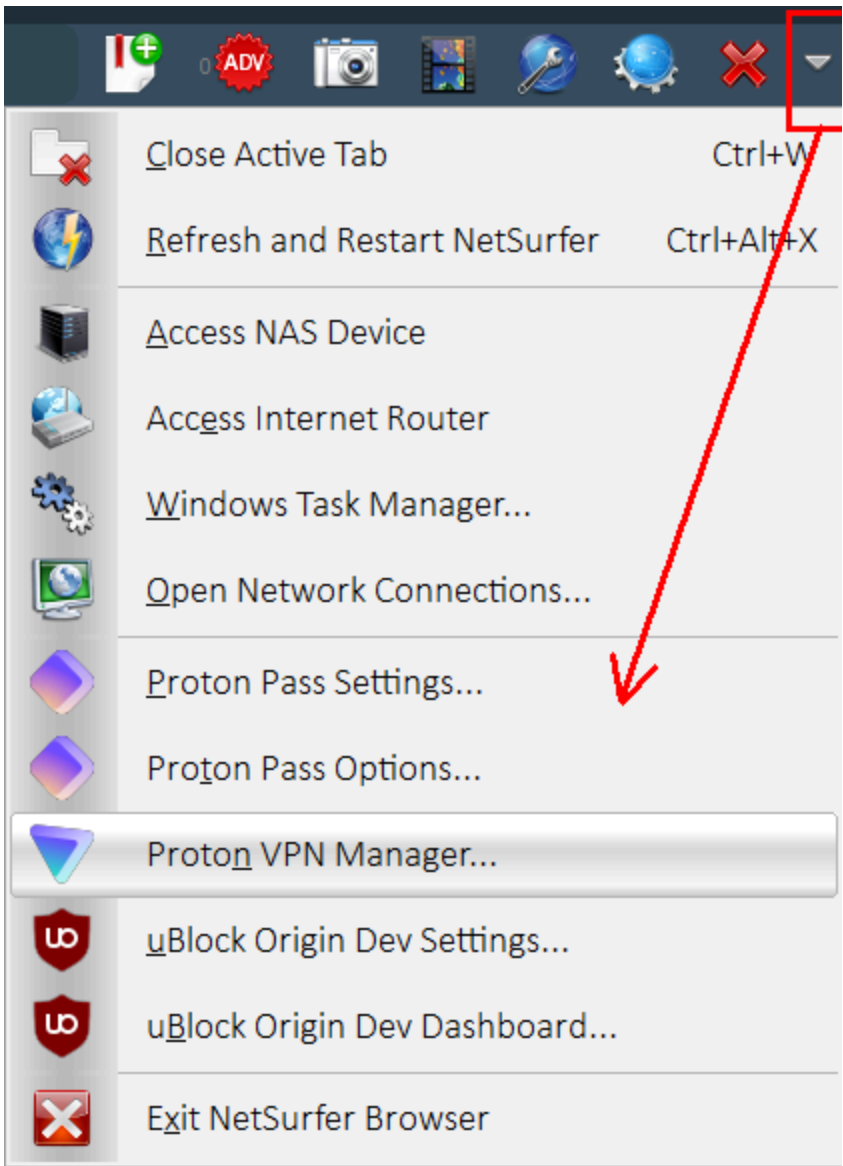
Our Ad-Blocker list will be updated as frequently as possible. Any custom URLs or data strings or files that you add yourself to the current list, will be merged with the Online Updated list.

If you have downloaded NetSurfer Prometheus... you may now install third-party extensions in the "manifest.json - v3.0 or v2.0" file format. You may find more extensions on GitHub. Not all extensions are compatible with our browser, unfortunately. Our latest browser is also compatible with Windows 7 and above. The WebView2 runtime control does not support extensions in Windows 7 or 8. Extensions are only available for Windows 10 and above...

NetSurfer Prometheus supports the installation of Unpacked Extensions from our own [Extension Library or GitHub!](#)



Simply open the right-most toolbar menu and select your extension's interface option...



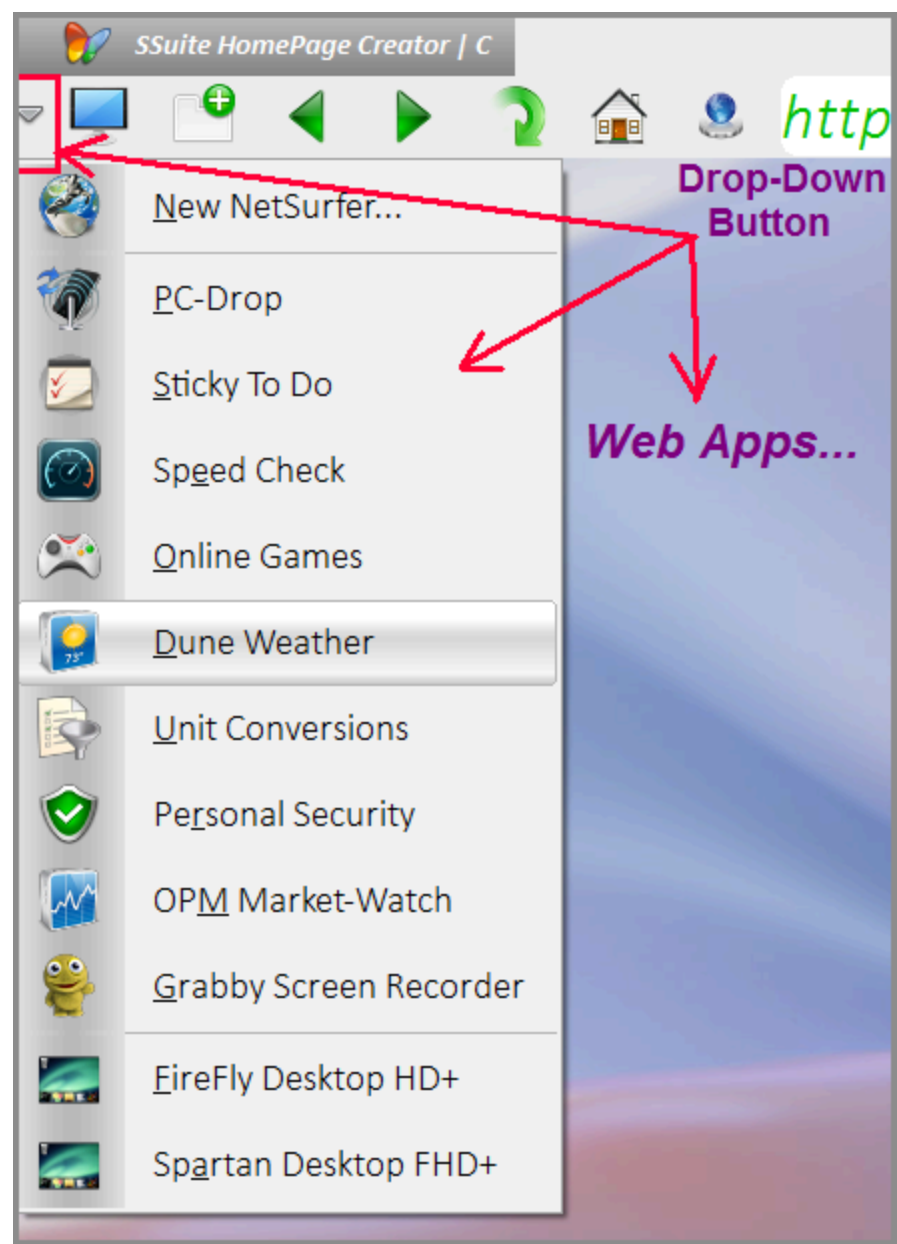
Menu options are only available for Proton Pass, Proton VPN, and all the uBlock Origin extensions! 😊

If you have downloaded and installed an extension, that has opened a menu immediately after installation, either inside the browser or in a popup window, just copy the URL link inside the popup window or simply create a bookmark to that menu in the browser to access it for later reference. 😊 😊

Some hidden productivity improvements and addons...

On the far left of the toolbar, you will find the following drop-down menu filled with our best [online PWA software](#).

When clicking on any of the web apps, they will open in the current visible window tab.

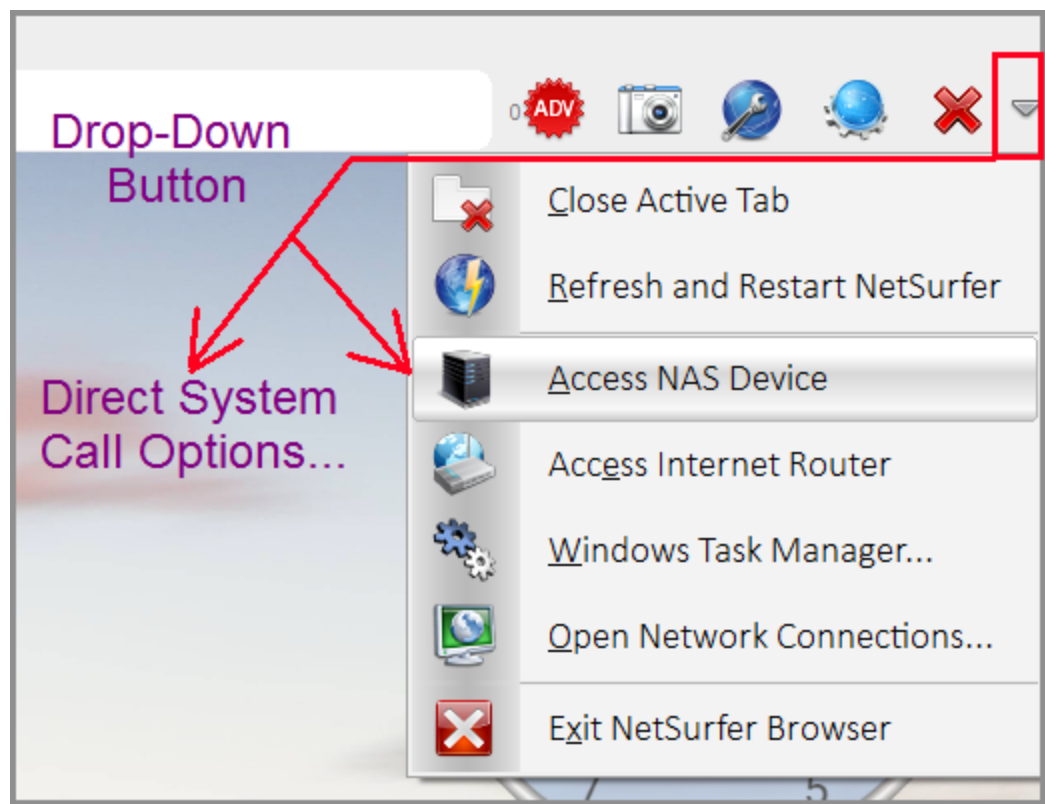


All of the above listed web apps are all Cloudless software, meaning when downloaded and ready to run, it stays inside the browser, on your computer, and does NOT require any further internet connection, except for the Weather, Speed Check, and Stock market apps which obviously require an internet connection to provide you with live data.

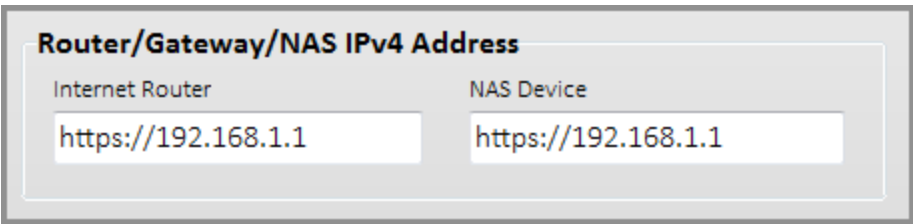
Some more hidden system calls...

On the far right of the toolbar, you will find the following drop-down menu as seen in the below image. You will find some useful direct browser and system calls for Windows here.

The "Refresh and Restart NetSurfer" option is most useful when you have plenty of tabs open and don't want to close them all manually. Just click on this option and NetSurfer will close the whole browser and start a new fresh instance and you may restart your web surfing all over again.

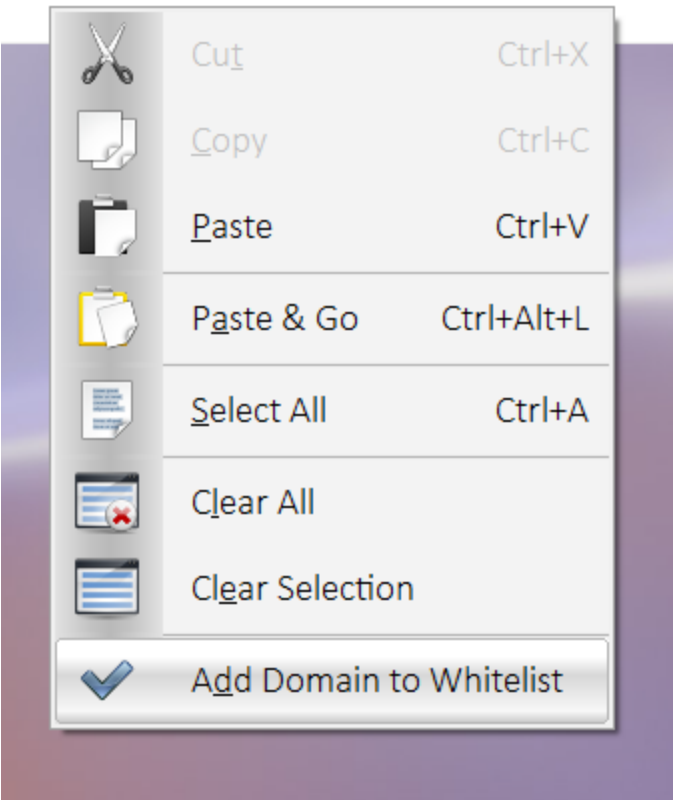


The "Access Internet Router" or the "Access NAS Device" option will open a new tab and navigate to the IP address that you've set on the "Settings" window, as seen in the below image. This will automatically open your internet router or NAS device's web interface login web page for direct instant access.



**Ad-Blocking Hiccups and Solutions**

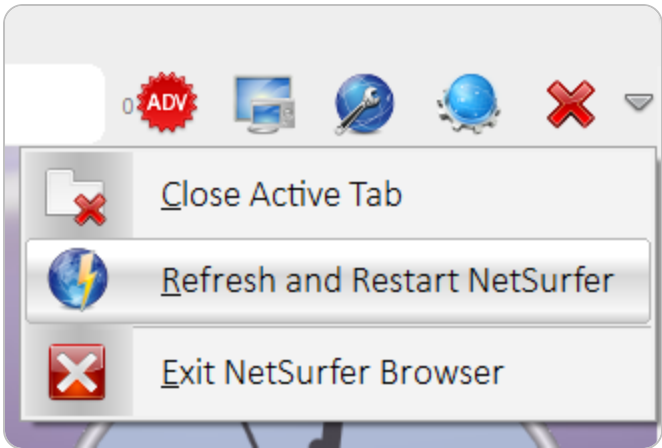
If you experiencing any problems on a website with downloads or video streaming, it might be their Ad-Blocking detection causing havoc with your viewing or downloads. Simply right-click on the address bar and add the website to the Ad-Blocking Whitelist and click refresh. This should solve your problem instantly.



**Quick tip on closing all those tabs and starting fresh...**

If you've been busy browsing the internet for a while, you would probably notice that you have a few or maybe a lot of tabs open. It can be quite the hassle to close all those tabs and starting over again with your surfing activities.

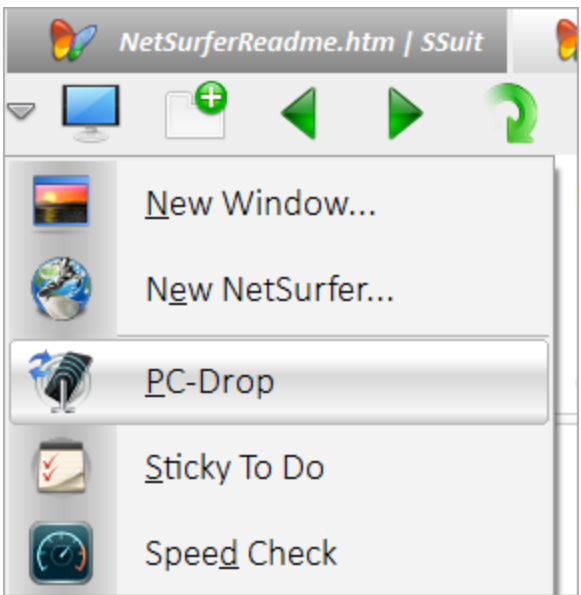
That's why we added this little function to our browser, just click on the the right-most drop-down menu and select the "Refresh and Restart NetSurfer" option. This action will close all your tabs in one go and restart NetSurfer completely fresh.





**SSuite PC-Drop is now included with SSuite NetSurfer Browser...**

[SSuite PC-Drop](#) makes it extremely easy to transfer/copy all files, documents, or images from an **Android** smartphone to any Windows PC that is connected to your local Wi-Fi network. This application uses direct Peer-To-Peer FTP(File Transport Protocol) communications for data transfers over your local Wi-Fi network.



Any local wireless network your smartphone is connected to may be used for data transfer. All devices with an IPv4 address that are connected to your local Wi-Fi network are able to send or receive files with SSuite PC-Drop. There is NO need for an internet connection or any registered cloud account for background syncing of data between devices.



**There are 3 methods of transfer; Phone-To-Phone | Phone-to-Windows PC | Windows-to-Windows**

There are two applications available for download. There is the Android app file (APK) and then there is the Windows WIN32 executable program in 32bit and 64bit versions.

Simply unzip the file and copy and paste them wherever you find best. SSuite PC-Drop uses the standard Android "Documents Folder" as the default folder to send and receive files from.

On your Windows system the program uses your "Public Documents" folder to send and receive files from. For user-friendliness operation, simplicity, and security reasons, the file paths are not allowed to be changed, this will ensure that you know where the files are being sent or received to.

**Quick Tip!** 🕶️ 😊

If you don't know your smartphone's IP address, simply send a file, any small file, from your smartphone to your Windows PC running the Windows edition of PCDrop. The sent file will enable to show your smartphone's IP address in the sender's IP address editbox of the Windows edition of PCDrop.



When running the Windows edition of PCDrop, the program will automatically show your Windows PC's IP address on the top center of the program's window. Send your file to that address for a quick reminder what your smartphone's IP address is. 😊

Quick Tip 2 🕶️ 😊



If you don't have a local Wi-Fi router or network, simply switch on your smartphone's Wi-Fi hotspot to create a local Wi-Fi peer-to-peer connection. Connect other smartphones to your Wi-Fi hotspot and start transferring files directly over your smartphone's Wi-Fi hotspot.

Just FYI on our Homepage selections...



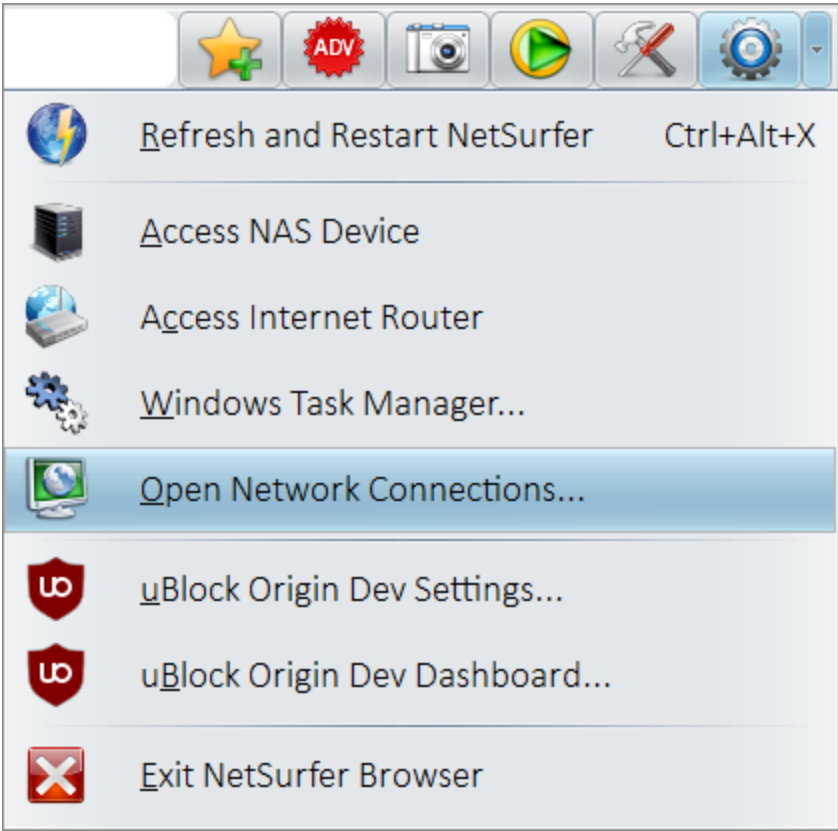
If you have one of our virtual desktops set as your homepage, you first need to navigate your homepage tab to another web page before closing. If you don't do this, the browser will not clear all the necessary memory in Windows and will create problems when running a new instance of NetSurfer.

Simply select one of the web apps from the left-most drop-down menu to change the homepage before closing your browser. This was never a problem before, but Microsoft changed the internal functions of the WebView2 control, preventing proper shutdown. I would suggest not using our virtual desktops as a homepage but as a web application, unless you are also willing to do the above actions when closing the browser(including being used as an app) to ensure proper running of new NetSurfer instances.

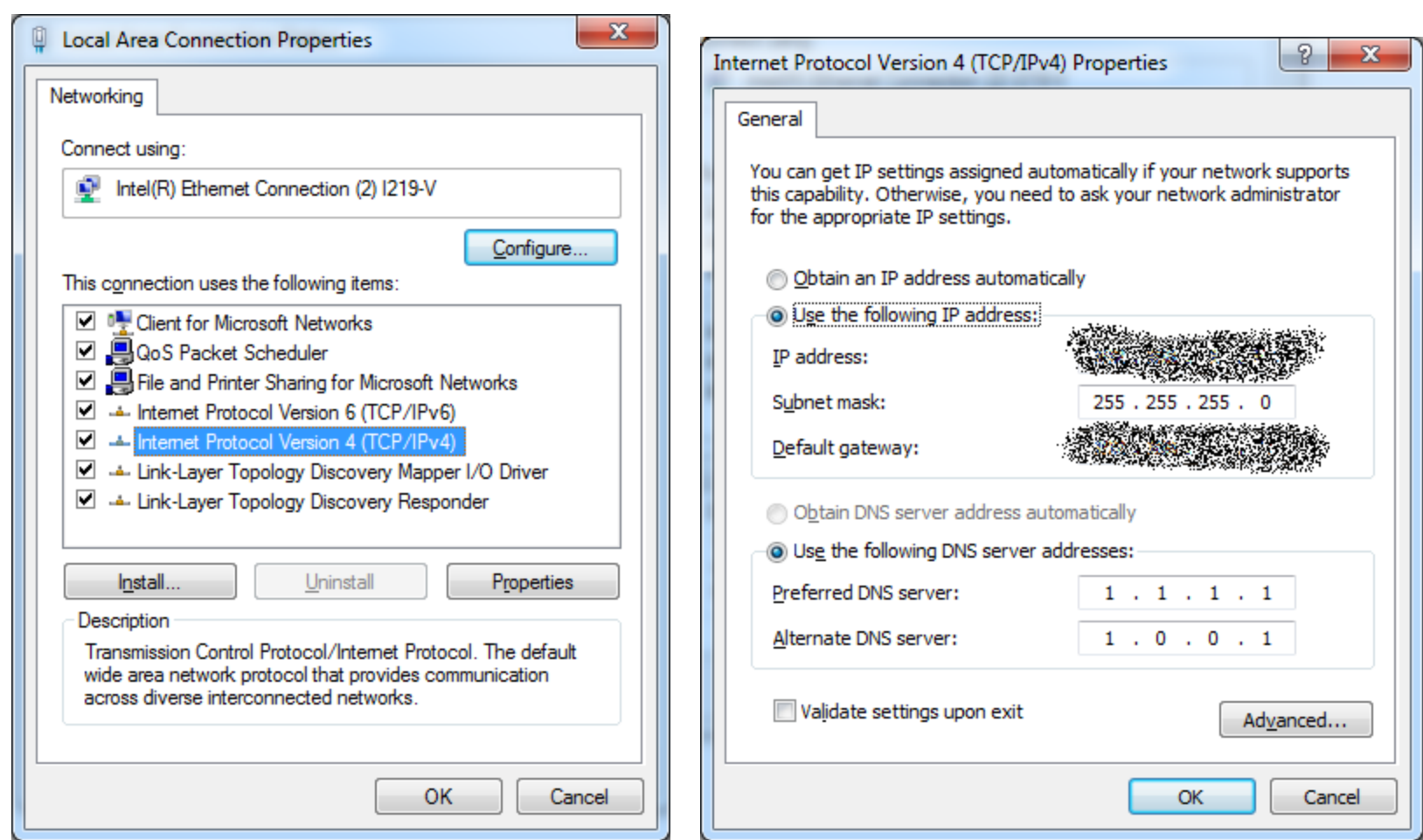
Start protecting your network connection:

Before you start doing anything, you will need to change your DNS server settings on your network connection to the internet. Go to your network connections in the Windows Control panel and open its network properties dialog window. In the dialog window, you need to change the DNS server addresses to a server that supports encrypted connections over HTTPS.

...Or simply use the following menu function in NetSurfer to open your Network connections...



- In our example we will be changing it to CloudFlare's servers e.g. Preferred 1.1.1.1. and Alternate 1.0.0.1 - Below you will see what you need to change to begin...



[Find more information here on securing your browser](#)

**Malware Blocking Only - IPv4**

Primary DNS: 1.1.1.2  
Secondary DNS: 1.0.0.2

**Malware and Adult Content Blocking - IPv4**

Primary DNS: 1.1.1.3  
Secondary DNS: 1.0.0.3

**General Secure Open Access Only - IPv4**

Primary DNS: 1.1.1.1  
Secondary DNS: 1.0.0.1

**Malware Blocking Only - IPv6**

Primary DNS: 2606:4700:4700::1112  
Secondary DNS: 2606:4700:4700::1002

**Malware and Adult Content Blocking - IPv6**

Primary DNS: 2606:4700:4700::1113  
Secondary DNS: 2606:4700:4700::1003

**General Secure Open Access Only - IPv6**

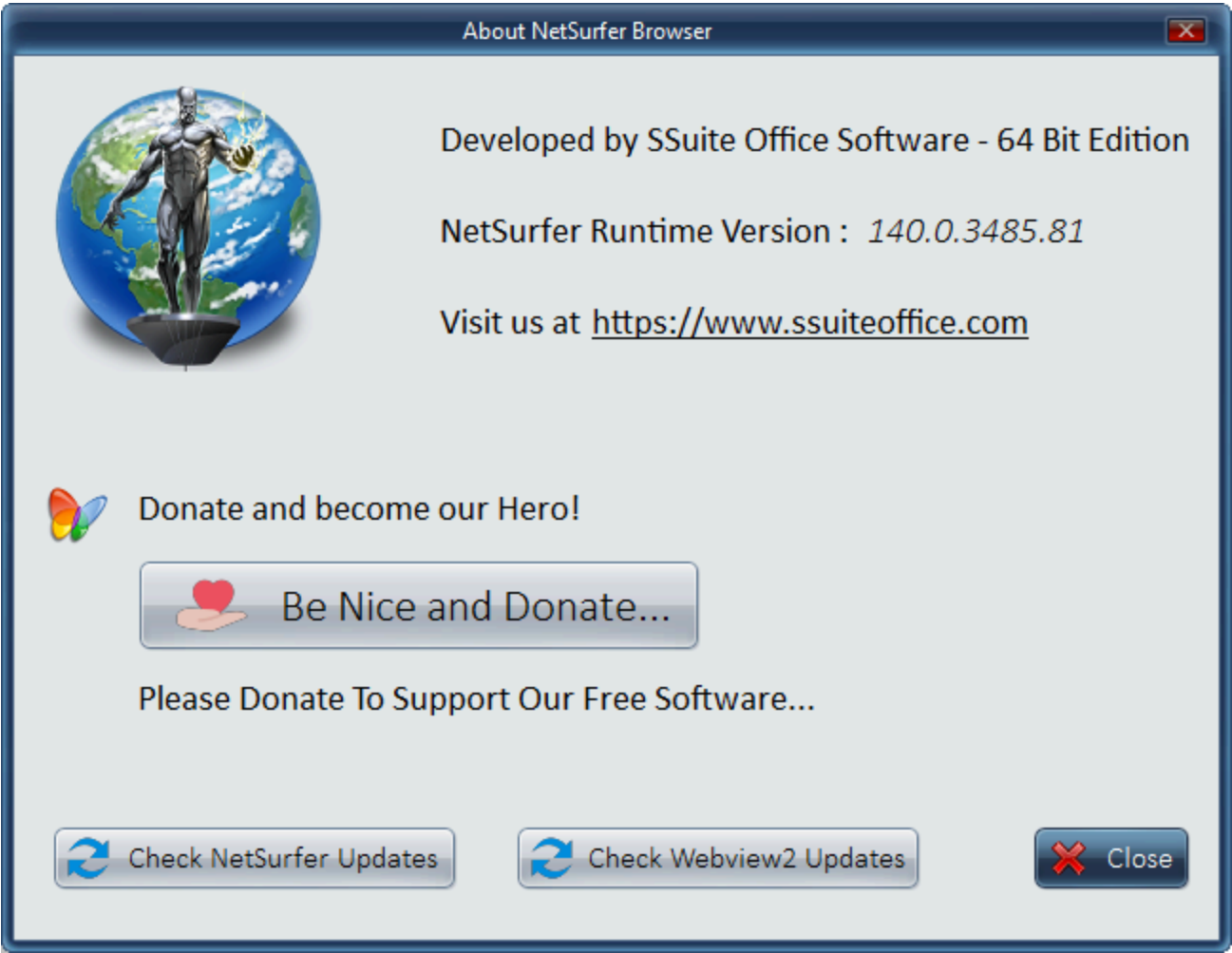
Primary DNS: 2606:4700:4700::1111  
Secondary DNS: 2606:4700:4700::1001

WebView2 Runtime Control - Windows System Compatibility

- Windows 12
- Windows 11
- Windows 10
- Windows 10 IoT Enterprise LTSC x32 2019
- Windows 10 IoT Enterprise LTSC x64 2019
- Windows 10 IoT Enterprise 21h1 x64
- Windows 8.1
- Windows 7
- Windows Server 2019
- Windows Server 2016
- Windows Server 2012
- Windows Server 2012 R2
- Windows Server 2008 R2

These are the shortcut keys for our browser...

Action	Shortcut
Open File	Ctrl + O
Open History Page	Ctrl + H
Open Download Page	Ctrl + J
Drag-Drop a Tab	Mouse Primary Button Down and Drag-Drop into position.
New Tab	Ctrl + T - Or just double-click on any open tab!
Close Tab	Ctrl + W - Or hover your mouse over the window's tab and click on the "X"
Save File	Ctrl + S - This function saves the current web page as a HTML document.
Hide Toolbar	Ctrl + Alt + T - Flips the visibility of the main Toolbar.
Dark Mode	Ctrl + Alt + D - Flips the mode between Light and Dark color display or themes.
Private Mode	Ctrl + M - Surf the web in private without any tracking and data collection!
Go Big Screen	Ctrl + Alt + B Or [ <i>F10</i> ] Partial Full Screen    Or    [ <i>F11</i> ] Full Screen
Bookmark Webpage	Ctrl + D
Focus Address Bar	Alt + D
Stop Page Download	Escape Key
Find on Page	Ctrl + F
Find Next	Ctrl + G
Find Previous	Ctrl + Shift + G
Print	Ctrl + P
Print to PDF	Ctrl + Alt + P
Refresh From Cache	Ctrl + R , F5 , Reload Key
Refresh From Server	Ctrl + Shift + R, Ctrl + F5, Shift + F5, Ctrl + Refresh, Shift + Refresh
Zoom Out	Ctrl + [ - ]
Zoom In	Ctrl + [ + ]
Reset Zoom	Ctrl + [ 0 ] (zero - null)
Zooming In and Out	Ctlr + Scroll Mouse Wheel Up or Down.
Find Next	F3
Find Previous	Shift + F3
Back	Alt + Left, Browser Back Key
Forward	Alt + Right, Browser Forward Key
Open / Close DevTools	Ctrl + Shift + I
Open DevTools Console	Ctrl + Shift + J
Open DevTools Inspect	Ctrl + Shift + C



How To Update Our NetSurfer Browser - Desktop Edition

Simply install the browser on your system by running the new install file you've just downloaded. All your web data will still be intact and accessible. This method goes for both the 32bit and 64bit editions. All your settings and adblocker updates will stay the same as before.



Setting ourselves apart from the rest...

We are still the ONLY software company in the world that does not require a "Login Prompt" or "Account Registration" for you to use our free [Progressive Web Applications](#) or [desktop software applications](#) without being feature restricted or functionally limited. All apps and games are FULL free editions!

Our online software also does NOT run in the Cloud, but directly inside our browser!

Your online safety and privacy are absolutely guaranteed!

Easter Egg 🐰:

Run NetSurfer with "Administrator Rights" to enable our latest **Warp Drive Gaming Mode!** This mode enables the browser to run with *Direct CPU and GPU* access and zero latency... 😎🚀⚡